



28, Maxfield Drive, Oteley Gardens, Oteley Road, Shrewsbury, SY2 6GE
£1,350 Per Month



28, Maxfield Drive, Oteley Gardens, Oteley Road, Shrewsbury, SY2 6GE

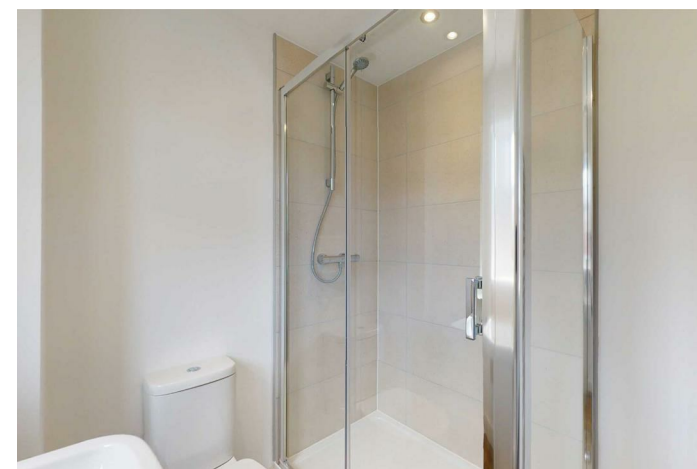
£1,350 Per Month

VIRTUAL TOUR AVAILABLE - Recently built spacious three bedroom detached house on the Bovis Homes development off Oteley Road. Garage and driveway parking.

Available from: 23/07/24

Description

Comprising: Entrance hall with WC, spacious living room with dual aspect windows, kitchen dining room with integrated appliances, dining area with french doors to rear garden, utility room with under-counter space for washing machine and side door to passageway. Stairs to upstairs landing, bedroom one with built in storage and en suite shower room, two further double bedrooms and bathroom with shower over bath. Gas Central Heating. Double Glazing. Rear Garden with passageway to side of property. Driveway parking for two vehicles and garage. EPC B.



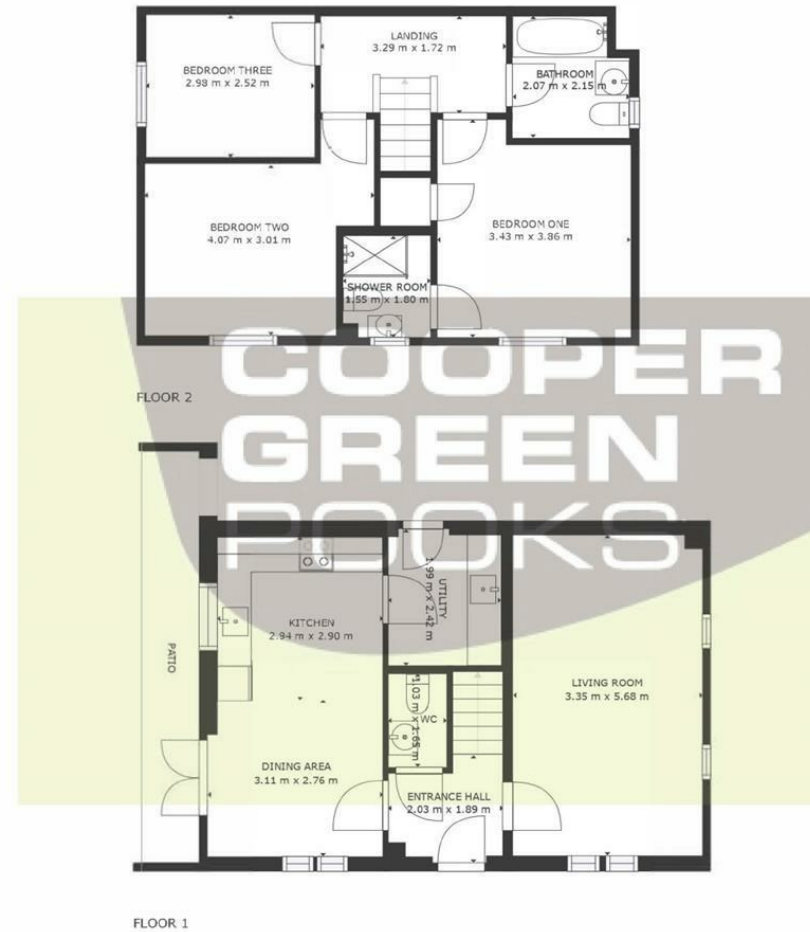
Unfurnished

Council Tax Band: D

Available: 23rd July 2024

EPC: B

Floor Plans



GROSS INTERNAL AREA
FLOOR 1: 50 m², FLOOR 2: 49 m²
EXCLUDED AREAS: , PATIO: 7 m²
TOTAL: 98 m²
SIZES AND DIMENSIONS ARE APPROXIMATE, ACTUAL MAY VARY.



These particulars, whilst believed to be accurate are set out as a general outline only for guidance and do not constitute any part of an offer or contract. Intending purchasers should not rely on them as statements of representation of fact, but must satisfy themselves by inspection or otherwise as to their accuracy. No person in this firm's employment has the authority to make or give any representation or warranty in respect of the property.